

Detector Switches

Specifications:

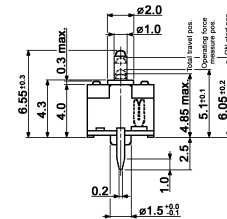
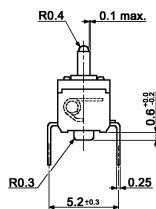
Contact rating:	30V DC, 100 mA
Contact resistance:	< 500 mΩ
Insulation resistance:	> 100 MΩ
Dielectric strength:	100 V, 50 Hz for the duration of 1 minute
Operating temperature:	-10 °C to +60 °C (DTS 06 A1 C-T: -40 °C to +85 °C)
Operating force:	0.3 ± 0.1 N
Mechanical life:	minimum 50 000 operations
Material:	Contacts: phosphor-bronze, silver-plated Terminals: brass, silver-plated Case and actuator: PA46, black

Models:

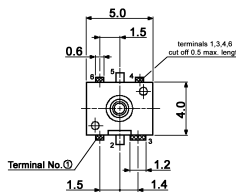
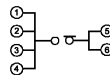
Switching functions

DT 106 C-P

off – mom

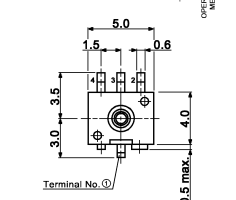
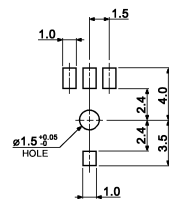
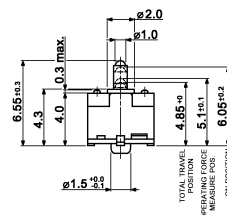
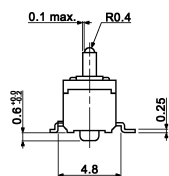


CIRCUIT DIAGRAM

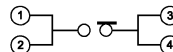


DTS 06 A-T

off – mom



CIRCUIT DIAGRAM



DTS 06 A1 C-T

off – mom

as DTS 06 A-T, but without posts

